



Product Details :-

Code : CAC105
Model : COB light - Curio series

Electrical Data :-

Working voltage range : 100 - 277VAC
Input voltage : 220 - 240VAC
Power : 12 Watt
Power factor : >0.9
Frequency : 50Hz
THD : < 15%
Driver : Constant current active
Powerfactor corrected
Driver efficiency : > 85%

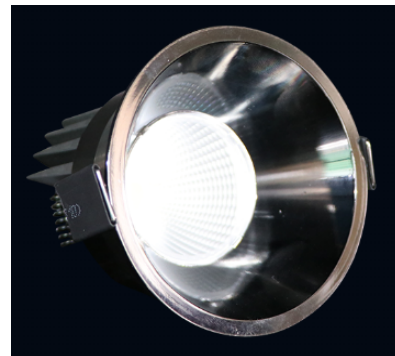
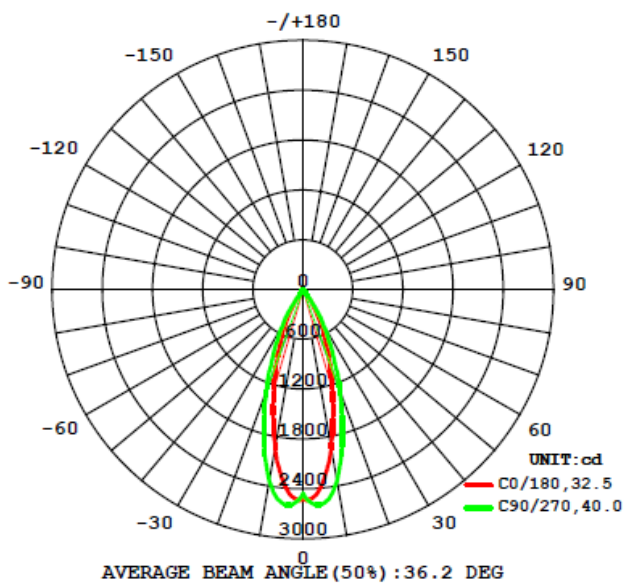
Light Data :-

LED Type : COB, LM80 Certified
System efficacy : >80lm/W
Beam angle : 36 Deg
CCT range : 2700 - 6500K
CRI(Ra) : Typical 70
Reflector : Polycarbonate reflector
LED Life time : 50,000 hours

Environmental :-

Working temperature : 0°C to + 55 °C
Working humidity : 10 to 90% RH
Storage temperature : -10 °C to + 85 °C
IP rating : IP20

Light distribution:-



0
Maintenance



Physical Details :-

Material & Construction : Pressure die cast aluminum casing
Product finish : Black powder coated
Fixture dimensions : Dia 82mm x H 80mm
Cut out dimensions : Dia 76mm
Suitable fixing : False ceiling

Applications : Indoor & Architectural lighting



* On all electrical parameters (+/-10%) tolerance to be considered

* On all mechanical dimensions & weight (+/-5%) tolerance to be considered

Note : The above specification are subjected to change without prior notice