



### Product Details :-

Code : HLMTFL12  
Model : Flood light - Magnetic series

### Electrical Data :-

Working voltage range : 100 - 277VAC  
Input voltage : 220 - 240VAC  
Power : 12Watt  
Power factor : > 0.9  
Frequency : 50Hz  
THD : < 10%  
Driver : Constant current active  
Powerfactor corrected  
Driver Efficiency : > 85%

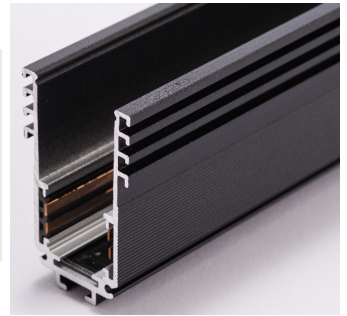
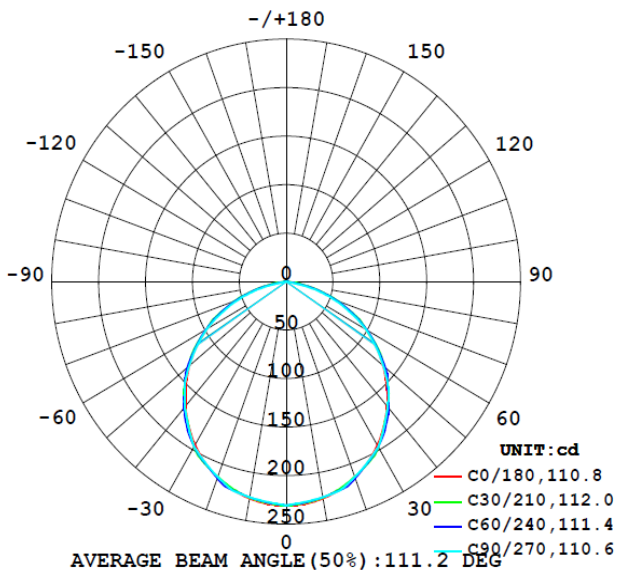
### Light Data :-

LED Type : SMD LED, LM80 Certified  
System efficacy : >70lm/W  
Beam angle : 120°  
CCT range : 2700 - 6500K  
CRI (Ra) : Typical 80  
Diffuser : Polycarbonate Diffuser  
LED Life time : 50,000 burning hours

### Environmental :-

Working temperature : 0°C to + 55 °C  
Working humidity : 10 to 90% RH  
Storage temperature : -10 °C to + 85 °C  
IP rating : IP20

### Light distribution :



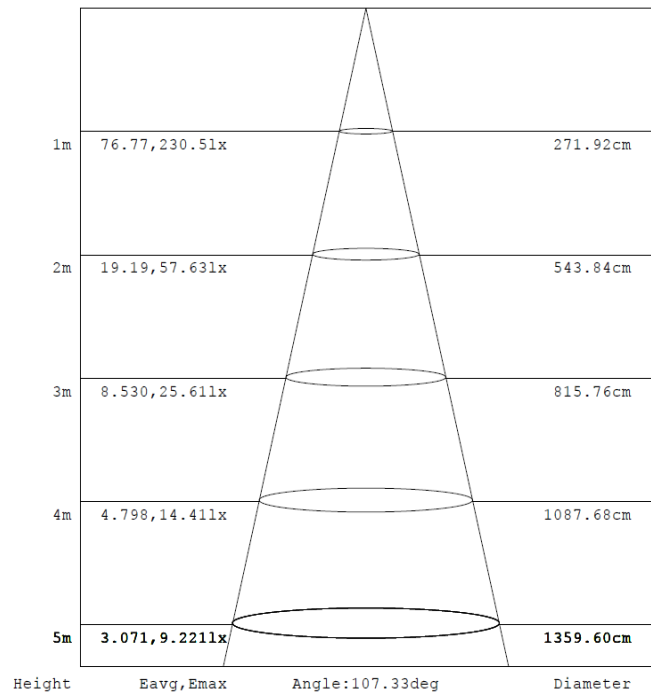
### Physical Details :-

Material : Aluminum  
Construction : Extruded aluminum with powder coated  
Fixture dimensions : L 304mm x W 22mm x H 43mm  
Suitable mounting : Track mount  
Weight : 0.17 Kgs approx.,

### Applications

: Indoor & Commercial

### AAI Curve :



\* On all electrical parameters (+/-10%) tolerance to be considered

\* On all mechanical dimensions & weight (+/-5%) tolerance to be considered

Note : The above specification are subjected to change without prior notice

VER2.24

