



Product Details :-

Code : HLMTGLB12
Model : Adjustable grill light - Magnetic series

Electrical Data :-

Working voltage range : 100 - 277VAC
Input voltage : 220 - 240VAC
Power : 12Watt
Power factor : > 0.9
Frequency : 50Hz
THD : < 10%
Driver : Constant current active
Powerfactor corrected
Driver Efficiency : > 85%

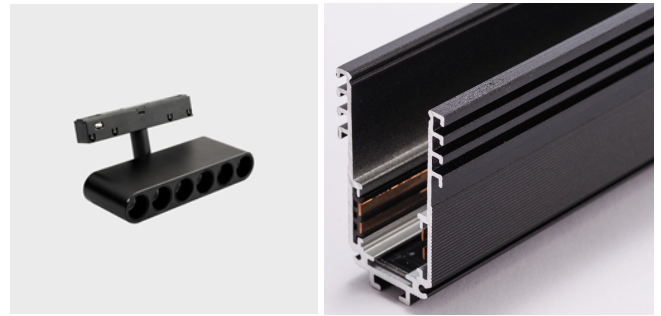
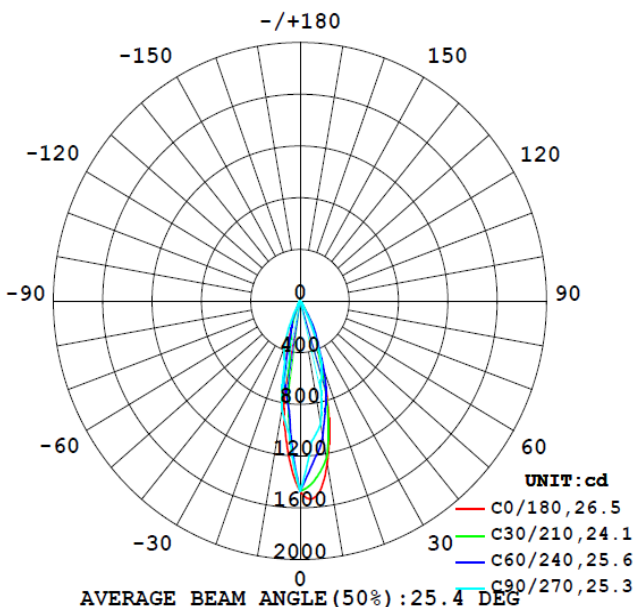
Light Data :-

LED Type : SMD LED, LM80 Certified
System efficacy : >80lm/W
Beam angle : 24°
CCT range : 2700 - 6500K
CRI (Ra) : Typical 80
Secondary optics : Polycarbonate lens
LED Life time : 50,000 burning hours

Environmental :-

Working temperature : 0°C to + 55 °C
Working humidity : 10 to 90% RH
Storage temperature : -10°C to + 85 °C
IP rating : IP20

Light distribution :

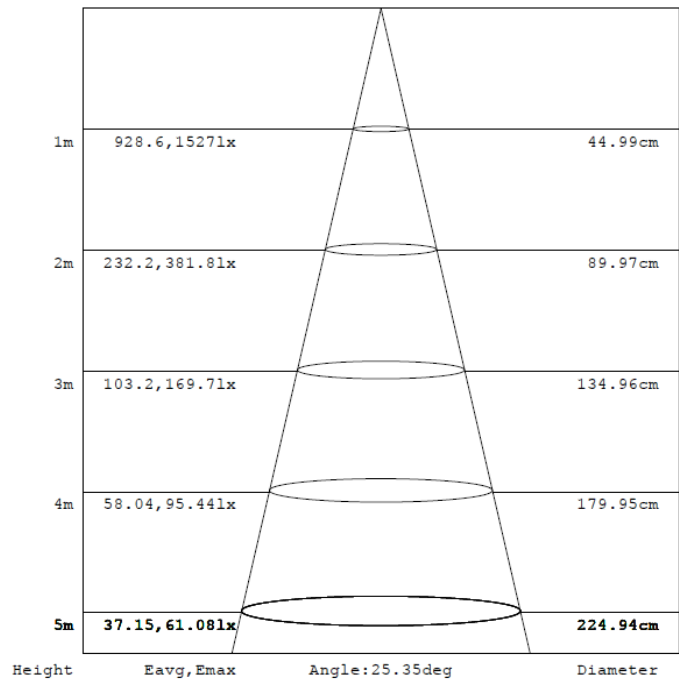


Physical Details :-

Material : Aluminum
Construction : Extruded aluminum with powder coated
Fixture dimensions : L 138mm x W 25mm x H 107mm
Suitable mounting : Track mount
Weight : 0.30 Kgs approx.,

Applications : Indoor & Commercial

AAI Curve :



* On all electrical parameters (+/-10%) tolerance to be considered

* On all mechanical dimensions & weight (+/-5%) tolerance to be considered

Note : The above specification are subjected to change without prior notice

