



Product Details :-

Code : BRFFL150S5M
Model : Flood light

Electrical Data :-

Working voltage range : 100 - 277 VAC
Input voltage : 220 - 240VAC
Power : 150Watt
Power factor : >0.95
Frequency : 50Hz
THD : < 15%
Driver : Constant current active
Powerfactor corrected
Driver registration No : BIS-IS15885-2-13:2012
R-63000353
& IS 16104:2012
Driver Efficiency : > 85%

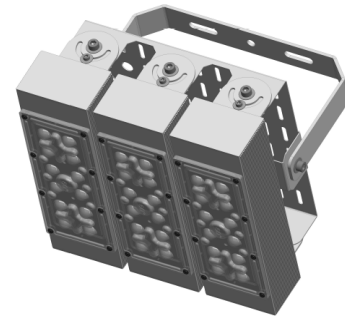
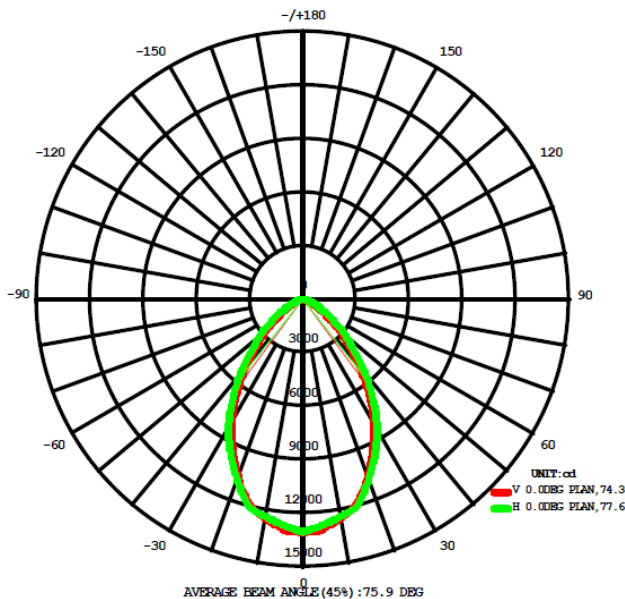
Light Data :-

LED Type : SMD LED, LM80 Certified
System efficacy : >120lm/W
LED Type : SMD, LM80 Certified
Beam angle : 60°
CCT range : 2700 - 6500K
CRI(Ra) : Typical 70
Lens : Polycarbonate lens cover
LED Life time : 50,000 hours

Environmental :-

Working temperature : 0°C to + 55 °C
Working humidity : 10 to 90% RH
Storage temperature : -10 °C to + 85 °C
IP rating : IP 65

Light distribution:-



Physical Details :-

Material : Aluminum
Construction : Extruded aluminum enclosure
Fixture dimensions : L 227mm x W 235mm x H 120mm
Suitable fixing : Wall / Pole / Surface mount

Protections :-

Output Over voltage / Under voltage protected : Provided
Output Over current and Short circuit : Provided
Surge protection : In built driver 4KV, External 10KV

Applications : Outdoor, Indoor & commercial

* On all electrical parameters (+/-10%) tolerance to be considered

* On all mechanical dimensions & weight (+/-5%) tolerance to be considered

Note : The above specification are subjected to change without prior notice

