



**Product Details :-**

Code : BRFL100S5M  
Model : Flood light

**Electrical Data :-**

Working voltage range : 100 - 277 VAC  
Input voltage : 220 - 240VAC  
Power : 100Watt  
Power factor : >0.95  
Frequency : 50Hz  
THD : < 15%  
Driver : Constant current active  
Powerfactor corrected  
Driver registration No : BIS-IS15885-2-13:2012  
R-63000353  
& IS 16104:2012  
Driver Efficiency : > 85%

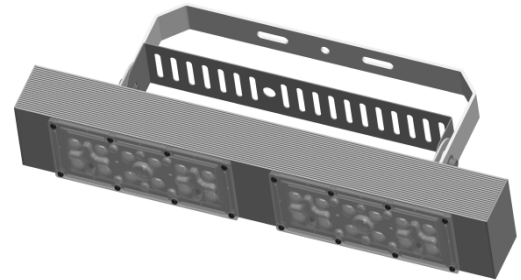
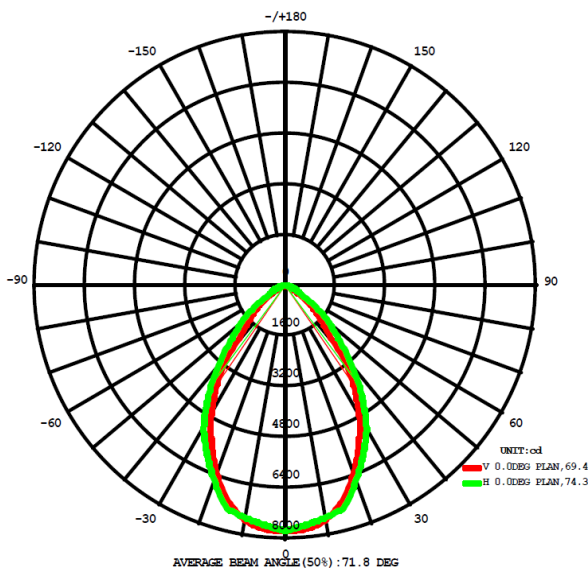
**Light Data :-**

LED Type : SMD LED, LM80 Certified  
System efficacy : >120lm/W  
LED Type : SMD, LM80 Certified  
Beam angle : 60°  
CCT range : 2700 - 6500K  
CRI(Ra) : Typical 70  
Lens : Polycarbonate lens cover  
LED Life time : 50,000 hours

**Environmental :-**

Working temperature : 0°C to + 55 °C  
Working humidity : 10 to 90% RH  
Storage temperature : -10 °C to + 85 °C  
IP rating : IP 65

**Light distribution:-**



**Physical Details :-**

Material : Aluminum  
Construction : Extruded aluminum enclosure  
Fixture dimensions : L 450mm x W 75mm x H 120mm  
Suitable fixing : Wall / Pole / Surface mount

**Protections :-**

Output Over voltage / Under voltage protected : Provided  
Output Over current and Short circuit : Provided  
Surge protection : In built driver 4KV, External 10KV

**Applications : Outdoor, Indoor & commercial**

\* On all electrical parameters (+/-10%) tolerance to be considered

\* On all mechanical dimensions & weight (+/-5%) tolerance to be considered

Note : The above specification are subjected to change without prior notice

