

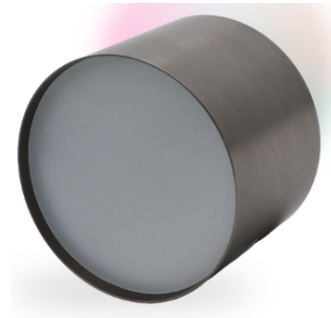


Product Details :-

Code : HLDS71112
Model : Surface Cob light

Electrical Data :-

Working voltage range : 100 - 277VAC
Input voltage : 220 - 240VAC
Power : 12 Watt
Power factor : > 0.95
Frequency : 50Hz
THD : < 15%
Driver : Constant current active
Powerfactor corrected
Driver efficiency : > 85%



Light Data :-

LED Type : SMD LED, LM80 Certified
System efficacy : >80 Lm/W
Beam angle : 120°
CCT range : 2700 - 6500K
CRI (Ra) : Typical 80
Diffuser : Polycarbonate diffuser
LED Life time : 50,000 hours

Physical Details :-

Material & Construction : Extruded aluminum enclosure
Fixture Dimensions : Dia 84mm x H 65mm
Suitable fixing : Surface mount

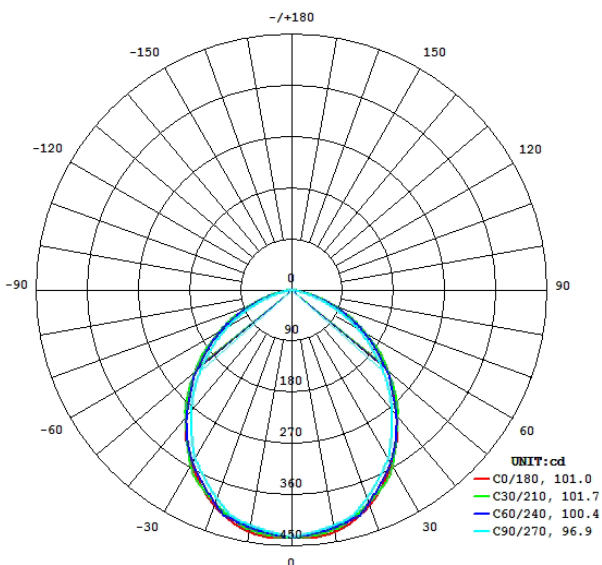
Applications

: Indoor & Commercial

Environmental :-

Working temperature : 0°C to + 55 °C
Working humidity : 10 to 90% RH
Storage temperature : 0°C to + 85 °C
IP rating : IP 20

Light distribution:-



* On all mechanical dimensions & weight (+/-5%) tolerance to be considered

* On all electrical parameters (+/-10%) tolerance to be considered

Note : The above specification are subjected to change without prior notice

