



Product Details :-

Code : X81
Model : Down light

Electrical Data :-

Working voltage range : 140 - 240 VAC
Power : 1W
Power factor : > 0.9
Frequency : 50Hz
THD : < 15%
Driver : Constant current
Driver efficiency : > 85%

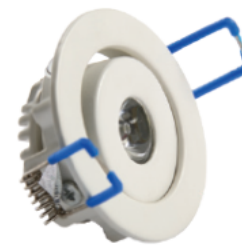
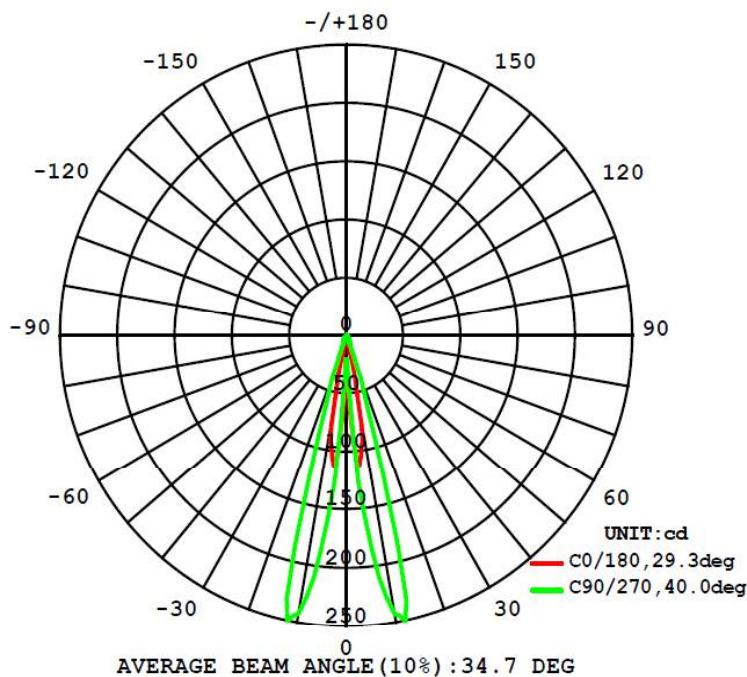
Light Data :-

LED Type : SMD LED, LM80 Certified
System efficacy : >50Lm/W
Beam angle : 36°
CCT range : 2700 - 6500K
CRI : Typical 70
Optics : Polycarbonate lens
LED Life time : 50,000 hours

Environmental :-

Working temperature : 0°C to + 55 °C
Working humidity : 10 to 90% RH
Storage temperature : -10°C to + 85 °C
IP rating : IP20

Light Distribution :-



0 Maintenance

50% ENERGY SAVING

ZERO Mercury

Physical Details :-

Material : LM6 grade aluminum or higher grade
Product finish : Powder coated
Construction : Pressure die cast aluminum enclosure
Fixture Dimensions : Dia 63mm x H 30mm
Fixture cut-out diameter : Dia 55mm
Suitable fixing : False ceiling

Applications : Indoor & commercial

* On all electrical parameters (+/-10%) tolerance to be considered

* On all mechanical dimensions (+/-5%) tolerance to be considered

Note : The above specification are subjected to change without prior notice

VER6.26

